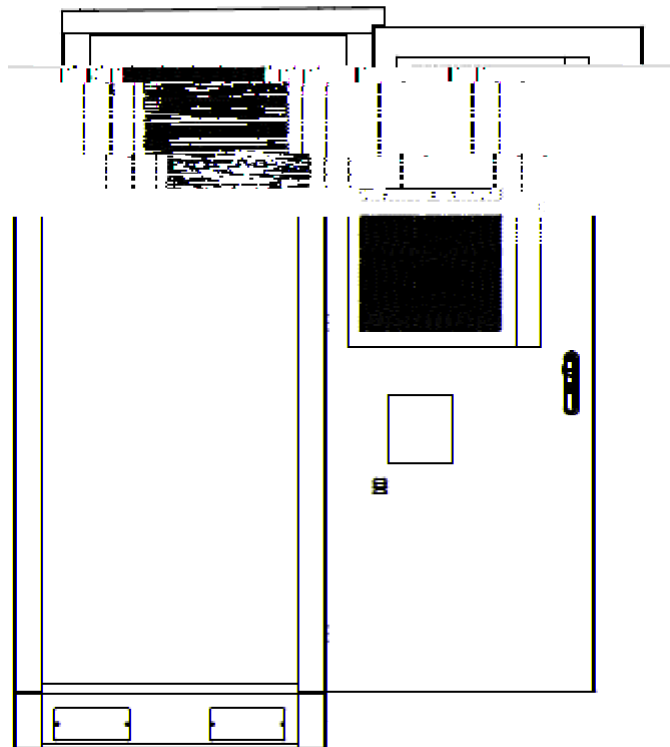


# Technical Specification

## Outdoor Power Cabinet

Model **ODA-WSSAP5-F11**



Sunsea IoT Technology Co.,Ltd.



---

## 1. Product Profile



---

### **3. Environmental Adaptability**

#### 3.1. Ambient Conditions

- Operation temperature -20 +55
- Relative humidity 5% 100% +30°C
- Atmospheric pressure 70 kPa 106 kPa
- Total radiation intensity of sun  $1120 \times (1 \pm 10\%) \text{ W/m}^2$

#### 3.2. Storage temperature

- Storage temperature -25 +55

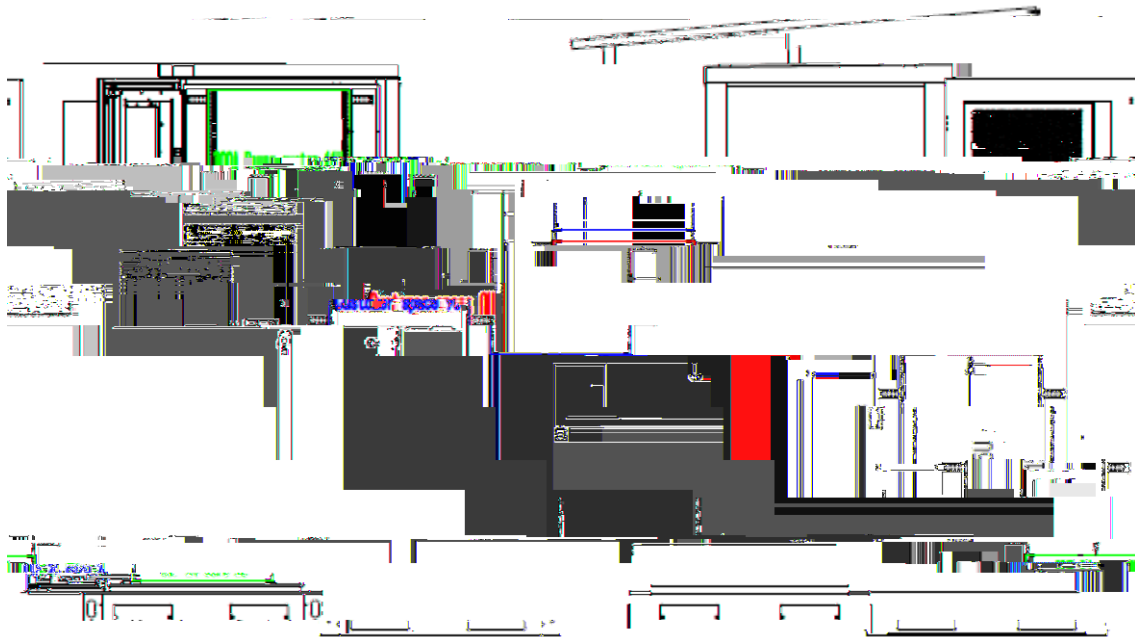
### **4. Basic Structure**

It contains: Whole-

## 5. Cabinet Composition

The internal part of the cabinet is a 19-inch standard installation rack for installation of battery units, and Integrate a variety of environmental sensors, air-conditioner cooling. It is suitable for outdoor diverse application scenarios. Whole-assembled structure wall panel with front door.

**Table 1 Cabinet Interface List**



1	Roof	14	Grounding bar 2
2	Frame	15	19 rack
3	Wall board	16	LED light
4	Plinth	17	Door sensor
5	Sunshield Optional	18	Smoke sensor
6	DC 1500w Air conditioner	19	Temp sensor
7	Lock	20	Water sensor
8	Generator socket	21	Plinth cover
9	300A Power system	22	Warning board
10	User equipment	23	AC input unit
11	Battery	24	Door latch
12	ODF,24 core, SC/APC	25	

